

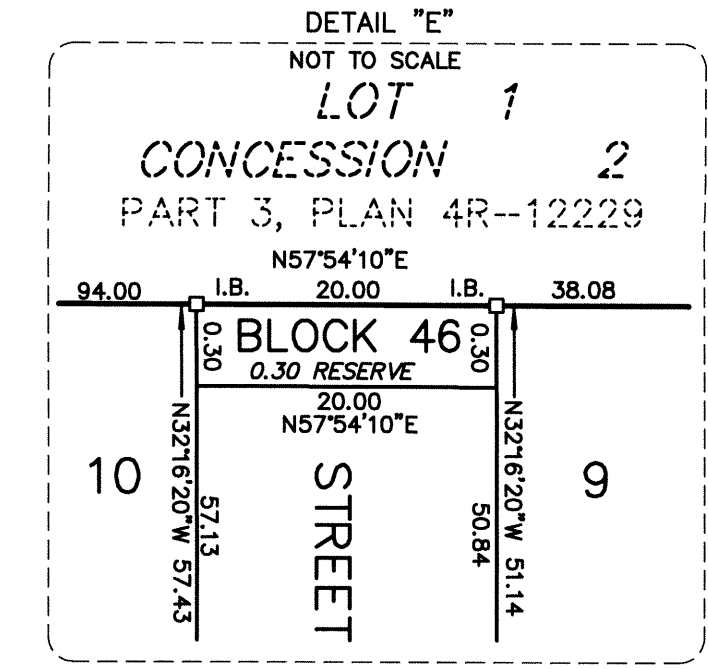
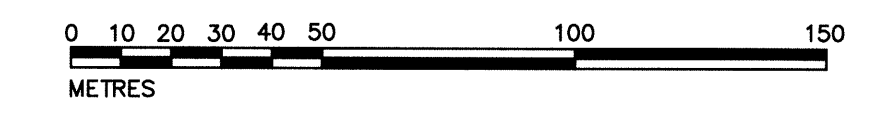
APPROVED UNDER SECTION 51 OF THE PLANNING ACT, BY THE  
CITY OF OTTAWA, THIS \_\_\_\_\_ DAY OF \_\_\_\_\_, 2020.

STEPHEN WILUS, M.O.P., R.P.R., GENERAL MANAGER  
PLANNING, INFRASTRUCTURE AND ECONOMIC DEVELOPMENT DEPARTMENT,  
CITY OF OTTAWA

**PLAN 4M--**  
I CERTIFY THAT THIS PLAN IS REGISTERED IN THE LAND REGISTRY OFFICE FOR THE LAND TITLES DIVISION OF OTTAWA CARLETON (No.4) AT \_\_\_\_\_ O'CLOCK ON THE \_\_\_\_\_ DAY OF \_\_\_\_\_, 20\_\_\_\_ AND ENTERED IN THE PARCEL REGISTER FOR PROPERTY IDENTIFIER \_\_\_\_\_ AND THE REQUIRED CONSENTS ARE REGISTERED AS PLAN DOCUMENT No. \_\_\_\_\_

REPRESENTATIVE FOR LAND REGISTRAR  
THIS PLAN COMPRISES PART OF THE LAND IDENTIFIED BY P.I.N. \_\_\_\_\_

**PLAN OF SUBDIVISION OF  
PART OF LOTS 2 AND 3  
CONCESSION 2  
GEOGRAPHIC TOWNSHIP OF OSGOODE  
CITY OF OTTAWA AND  
PART OF BLOCKS 42, 44 AND 45 AND  
BLOCK 46  
REGISTERED PLAN 4M-1346  
CITY OF OTTAWA  
SCALE 1:1500**



**METRIC**  
DISTANCES AND COORDINATES SHOWN ON THIS PLAN ARE IN METRES AND CAN BE CONVERTED TO FEET BY DIVIDING BY 0.3048

**NOTES**  
BEARINGS SHOWN ON THIS PLAN ARE MTM GRID BEARINGS, DERIVED FROM OBSERVED REFERENCE POINTS (ORP) A AND B, SHOWN HEREON, BY REAL TIME NETWORK OBSERVATIONS, MTM ZONE 9, NAD 83 (ORIGINAL).

DISTANCES SHOWN ON THIS PLAN ARE HORIZONTAL GROUND DISTANCES AND CAN BE CONVERTED TO GRID DISTANCES BY MULTIPLYING BY THE COMBINED SCALE FACTOR OF 0.999942

**ALL MONUMENTS PLANTED ARE STANDARD IRON BARS UNLESS OTHERWISE NOTED.**

S.I.B. DENOTES 0.025 SQ. 1.2 LONG, STANDARD IRON BAR  
S.S.I.B. DENOTES 0.025 SQ. 0.6 LONG, SHORT STANDARD IRON BAR  
I.B. DENOTES 0.016 SQ. 0.6 LONG, IRON BAR  
M DENOTES SURVEY MONUMENT FOUND  
W DENOTES SURVEY MONUMENT PLANTED  
WT. DENOTES WITNESS  
725 DENOTES R.W. ARNETT, O.L.S.  
857 DENOTES FARHALL, MCFATT & WOODLAND LTD.  
1319 DENOTES W.J. WEBSTER, O.L.S.  
1697 DENOTES J.P. SHIPMAN, O.L.S.  
A00 DENOTES ANNIS, O'SULLIVAN, VOLLEBEK LTD.  
P1 DENOTES PLAN 4R-XXXXX

OBSERVED REFERENCE POINTS (ORP): MTM ZONE 9, NAD 83 (ORIGINAL)	NORTHING	EASTING
POINT IDENTIFICATION		
ORP A	5011951.35	372824.44
ORP B	5011690.19	372875.38

COORDINATES SHOWN TO URBAN ACCURACY IN ACCORDANCE WITH OREG 216/10, SECTIONS 14, AND 31 TO 35 (BOTH INCLUSIVE).  
COORDINATES CANNOT, IN THEMSELVES, BE USED TO RE-ESTABLISH CORNERS OR BOUNDARIES SHOWN ON THIS PLAN

**OWNER'S CERTIFICATE**  
THIS IS TO CERTIFY THAT:  
(1) LOTS 1 TO 42, BOTH INCLUSIVE, BLOCK 43, BLOCK 44, THE STREETS NAMED STREET 1, STREET 2, STREET 3 AND STREET 4, AND THE RESERVES, NAMELY BLOCK 45 AND BLOCK 46 HAVE BEEN LAID OUT IN ACCORDANCE WITH MY INSTRUCTIONS.  
(2) THE STREETS ARE DEDICATED AS PUBLIC HIGHWAYS.

DATED THE \_\_\_\_\_ DAY OF \_\_\_\_\_, 2020.

I HAVE THE AUTHORITY TO BIND THE CORPORATION  
KRIS GORDON  
PRESIDENT  
RIDEAU FOREST DEVELOPMENT LTD.

**SURVEYOR'S CERTIFICATE**  
I CERTIFY THAT:  
(1) THIS SURVEY AND PLAN ARE CORRECT AND IN ACCORDANCE WITH THE SURVEYORS ACT AND THE LAND TITLES ACT AND THE REGULATIONS MADE UNDER THEM;  
(2) THE SURVEY WAS COMPLETED ON THE \_\_\_\_\_ DAY OF \_\_\_\_\_, 2020.

DATE \_\_\_\_\_  
J.P. SHIPMAN  
ONTARIO LAND SURVEYOR

